

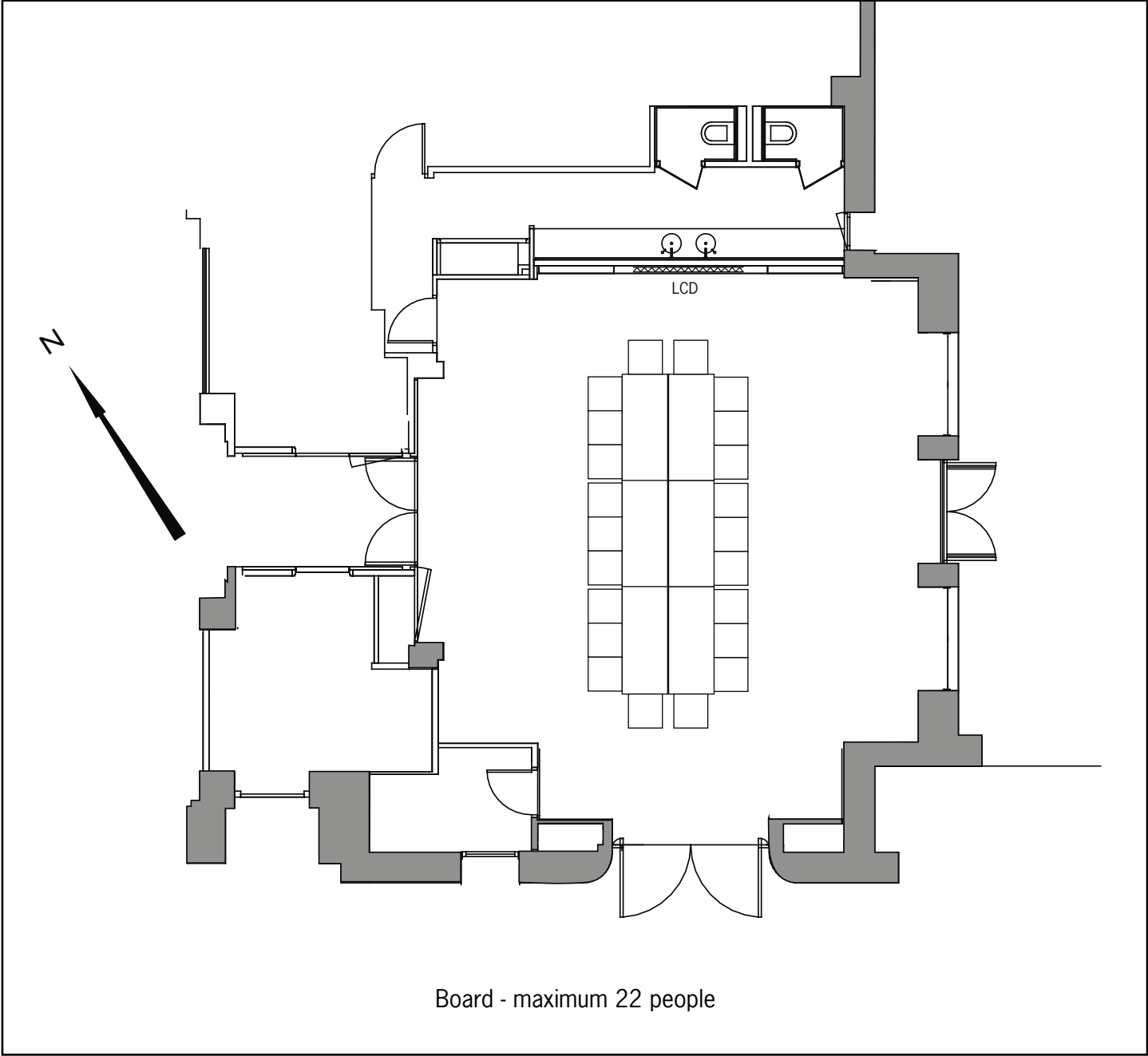
Legend

Level: ground floor
 Orientation: south
 Height to ceiling: 2,90 m et 4,20 m / 9.5 ft and 13.8 ft
 Salon area: 70 sq m / 753.5 sq ft
 Scale: 1/100

	Electrical Box: 2 x 220v sockets 1 x 220v emergency power socket 1 RJ45 plug 1 TV socket 1 telephone connection (RJ45)		Electrical Box: 1 x 220v socket 1 x 220v emergency power socket 1 RJ45 plug 1 TV socket 1 telephone connection (RJ45) 2 microphone sockets		Socket with: 4 x 220v sockets 1 computer socket (RJ45) 1 telephone connection (RJ45)		LCD screen		daylight
--	---------------------------------------------------------------------------------------------------------------------------------------	--	--------------------------------------------------------------------------------------------------------------------------------------------------------------	--	-----------------------------------------------------------------------------------------------	--	------------	--	----------

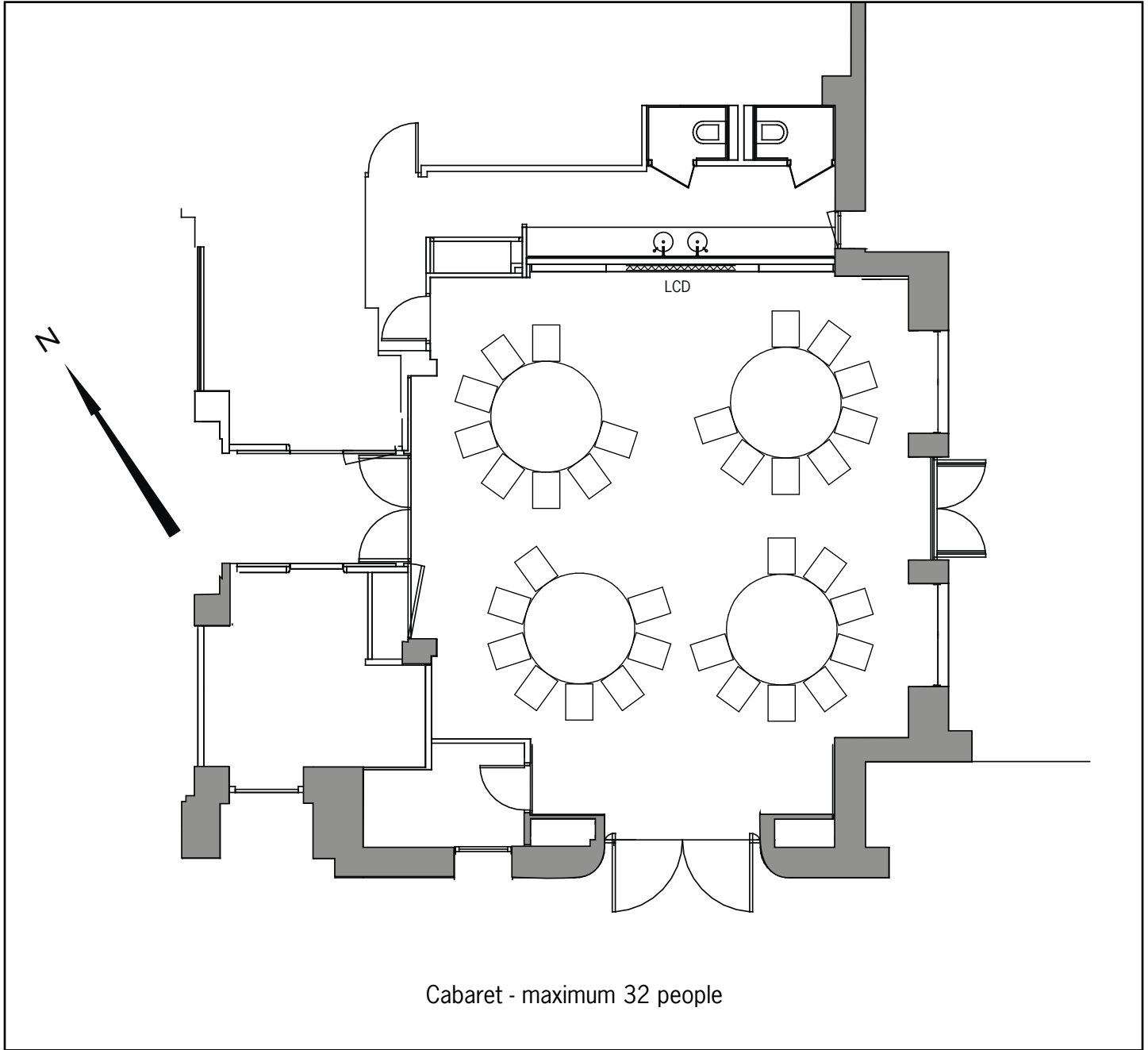
Board	Cabaret	Classroom	Theatre	U-shape	Hollow Square	Banquet	Cocktail
22	32	24	65	23	28	60	80

Scale : 1/100



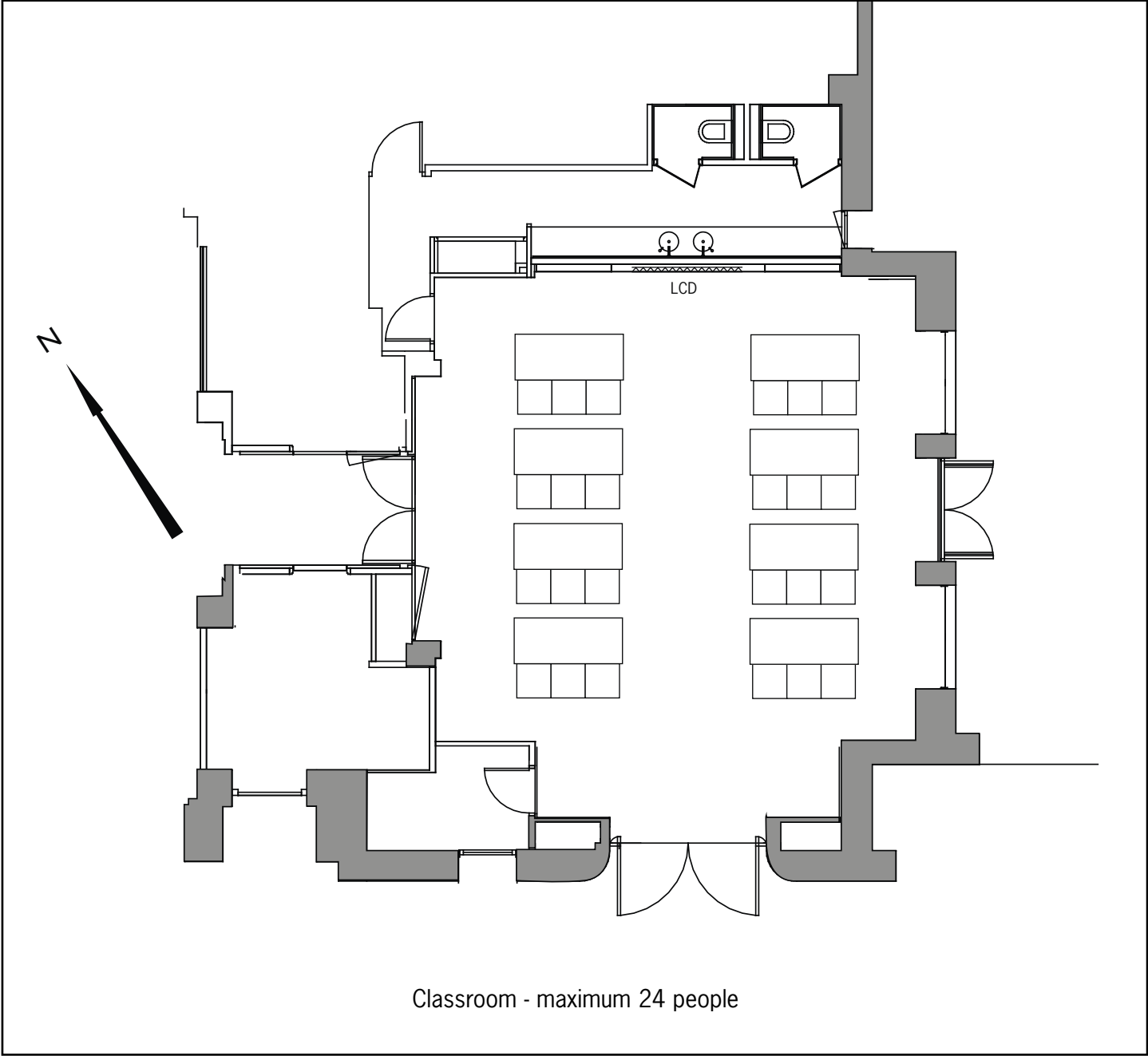
For technical information, please refer to general floorplan (without set-up)

Scale : 1/100



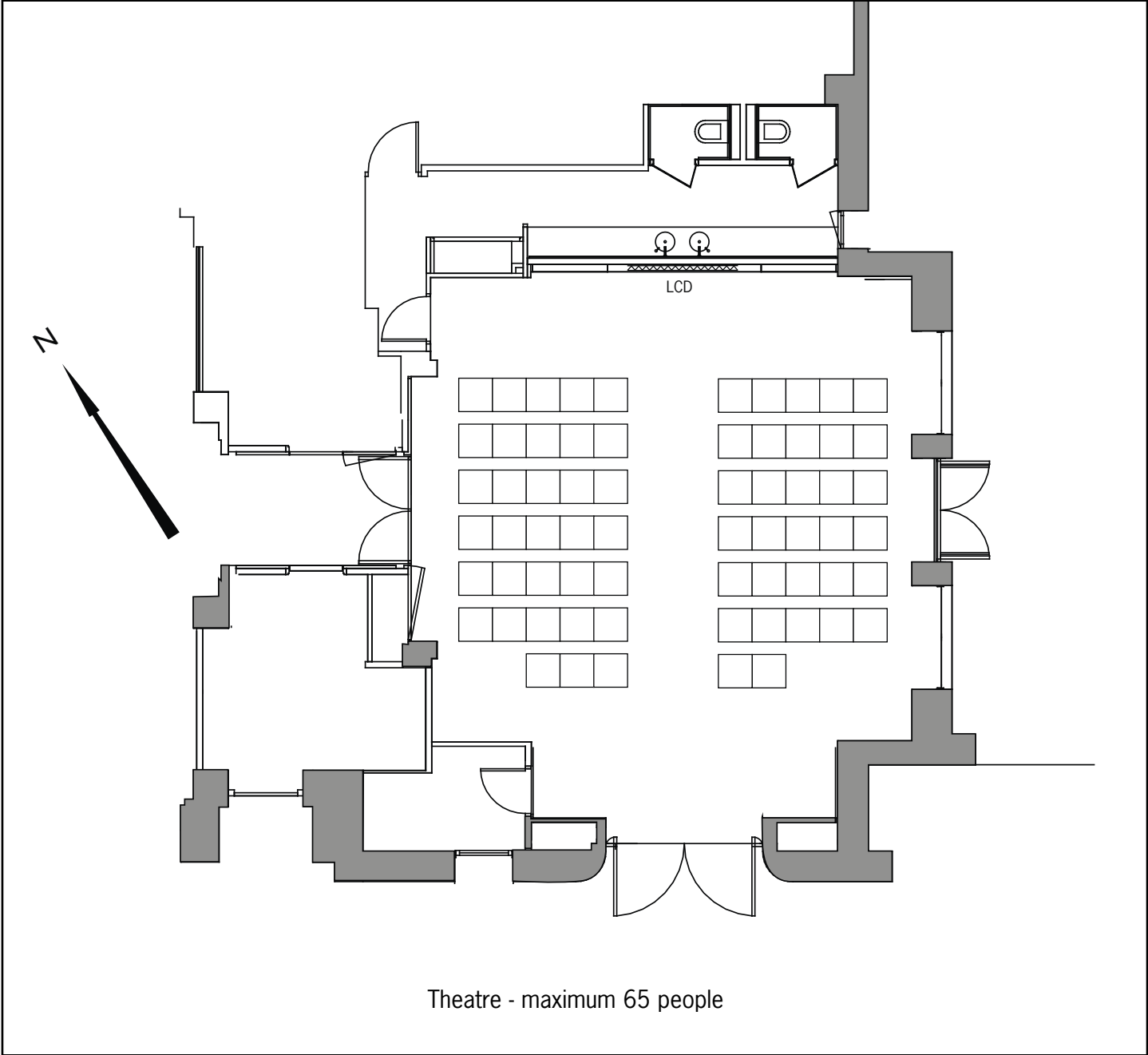
For technical information, please refer to general floorplan (without set-up)

Scale : 1/100



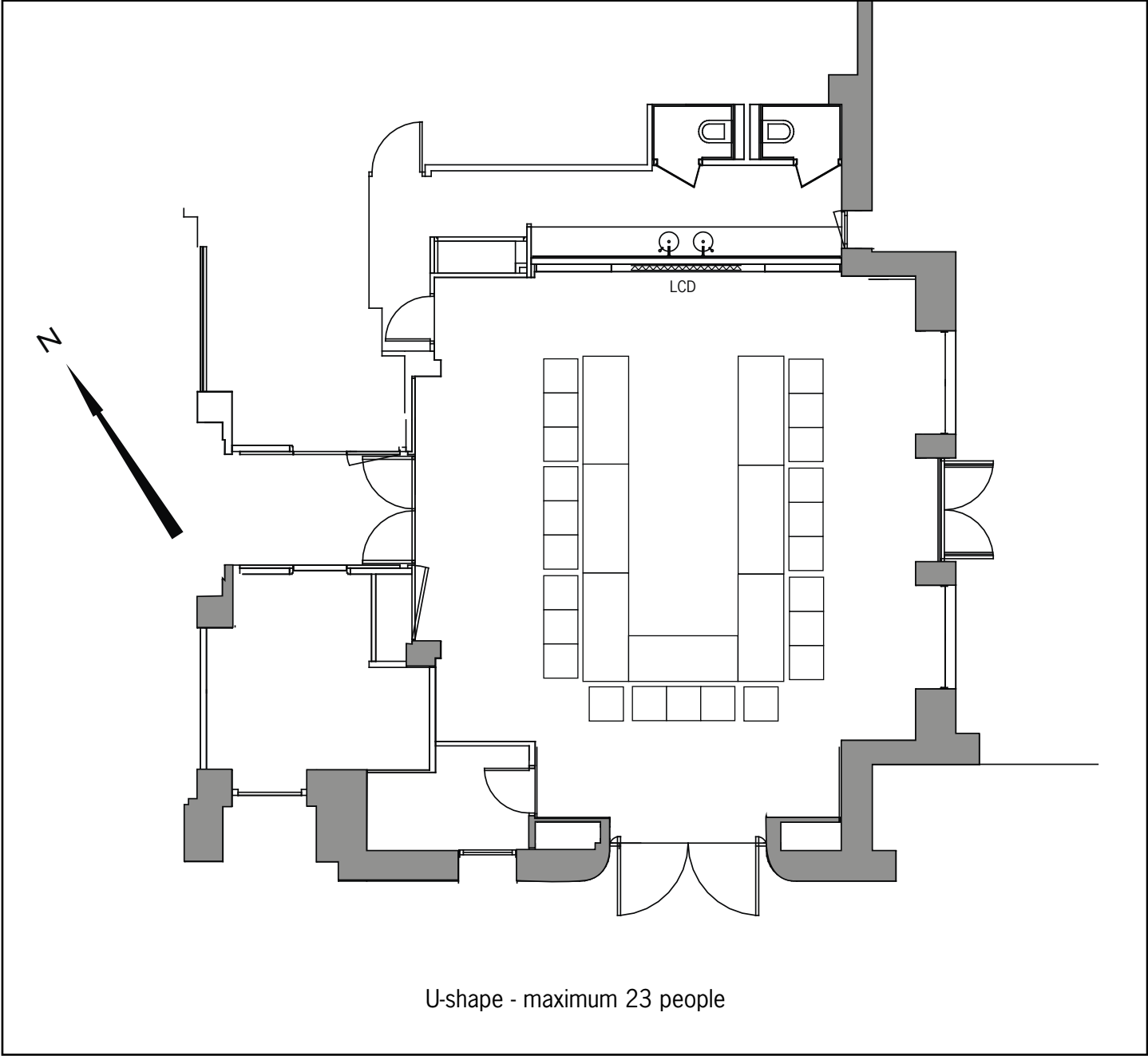
For technical information, please refer to general floorplan (without set-up)

Scale : 1/100



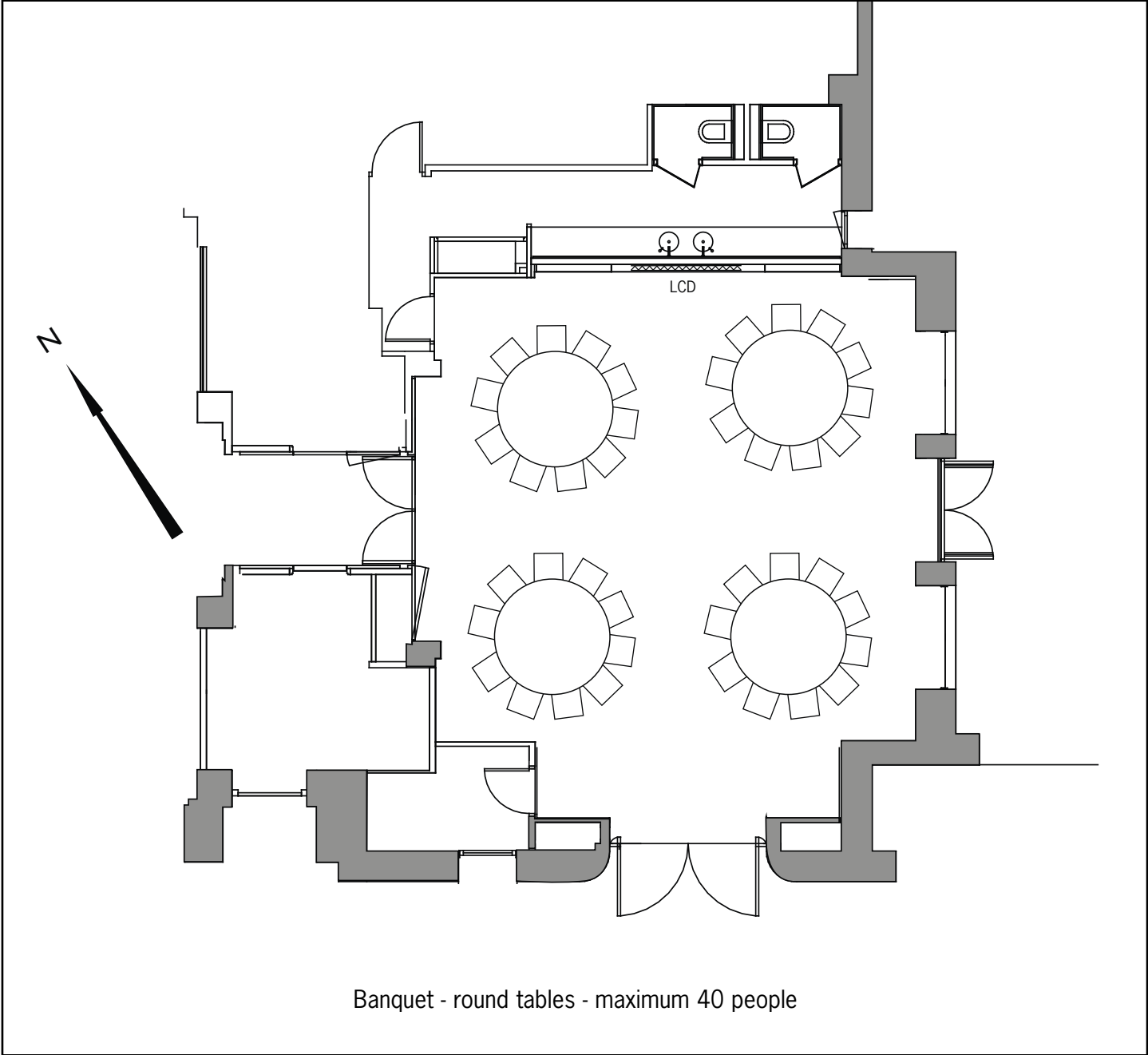
For technical information, please refer to general floorplan (without set-up)

Scale : 1/100



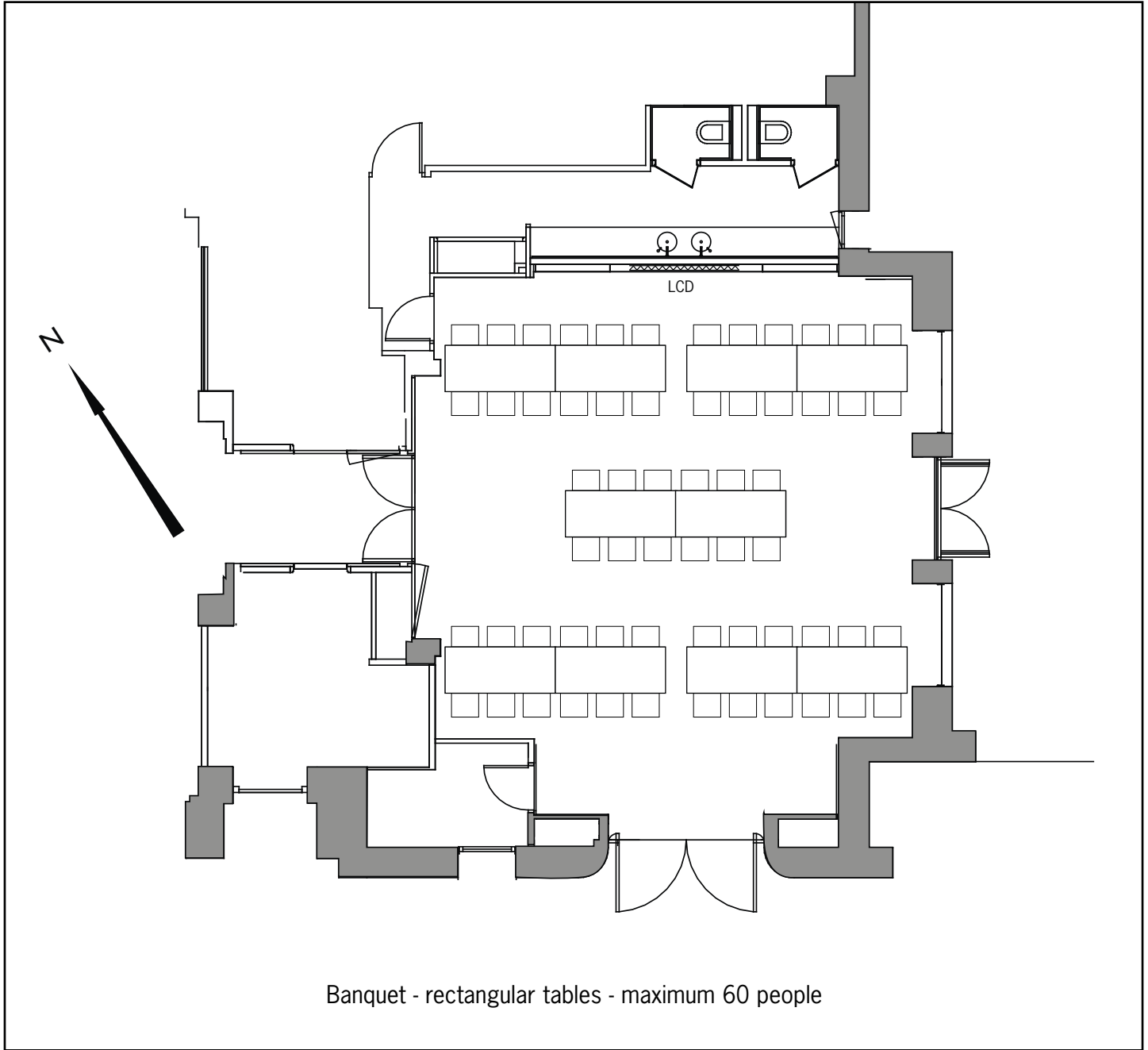
For technical information, please refer to general floorplan (without set-up)

Scale : 1/100



For technical information, please refer to general floorplan (without set-up)

Scale : 1/100



For technical information, please refer to general floorplan (without set-up)